

Integra® Padgett®

Instrumentation for Aesthetic and
Reconstructive Breast Procedures

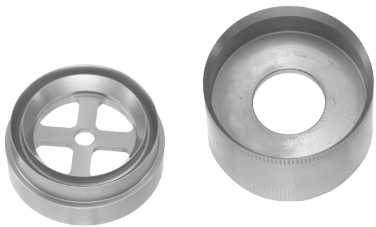
Limit uncertainty with
the brand you trust



INTEGRA®
LIMIT UNCERTAINTY

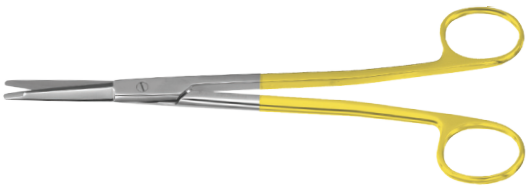
Grossman Areola Markers (8 sizes)
Freeman Areola Markers

- Can be used pre-op for measuring the nipple-areola complex (NAC)
- Used to mark skin prior to incision when replacing the NAC
- Hole in the center used for centering purposes.



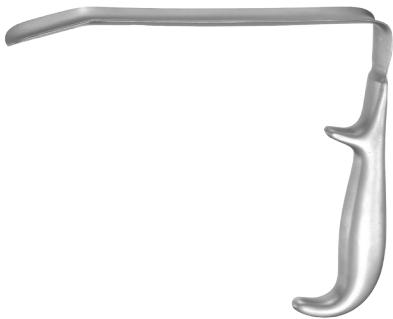
Padgett® SuperCut Tungsten Carbide Scissors

- Large selection of specialty scissors
- Tungsten Carbide inserts are fused into the blades for durability
- SuperCut style provides one serrated blade to grip and one sharp blade to cut



Ferreira Breast Augmentation Retractor

- Used to retract soft tissue when positioning the implant
- With and without fiber optics
- Angled tip aids in visualization
- Designed as a multiple approach retractor



Halpern Breast Marker

- Marker for repositioning of the nipple
- Screw adjustment fixes the angle to facilitate marking the contralateral breast



Crow Coagulating Forceps

- Long length assists with access to tight spaces
- Insulated shafts with exposed tips



Agris-Dingman Submammary Dissector

- Used to create a submammary pocket for insertion of the implant
- Separates breast's soft tissue from the muscle to create the pocket
- Set of 2, left and right patterns, 14"



Dissectors

Reference	Description	Length	Width	Diameter
P625	Penn Breast Dissector	12¾" (324mm)	1" (25mm)	-----
P630	MacCollum-Dingman Breast Dissector	6⅛" (410mm)	1.5" (38mm)	-----
P635	MacCollum-Dingman Submammary Dissector	11¾" (298mm)	20mm	-----
P637	McInnis PolyCurette Breast Instrument	12½" (318mm)	30mm	-----
P632	Jacobs Transaxillary Dissector	17" (432mm)	½" (13mm)	-----
P634	Wieslander Breast Dissector	17¾" (451mm)	1" (25mm)	-----
P636	Wieslander Breast Dissector	17" (432mm)	1⅜" (35mm)	-----
P4865	Reynolds Transaxillary Breast Dissector	15½" (394mm)	38mm	-----
P9054	Silverstein Breast Dissector	13½" (343mm)	-----	-----
P4990	Agris-Dingman Submammary Dissector, right & left	14" (356mm)	-----	-----
P5990	Agris-Dingman Submammary Dissector, extra long arms, right & left	16" (406mm)	-----	-----

Markers

Reference	Description	Length	Width	Diameter
P454	Grossman Areola Marker, 8 sizes	-----	-----	(38mm–52mm)
P470	Chang Areola Marker, with quadrant marks	-----	-----	-----
P464	Freeman Areola Marker	-----	-----	38mm
P465	Freeman Areola Marker	-----	-----	42mm
P466	Freeman Areola Marker	-----	-----	50mm
P467	Freeman Areola Marker	-----	-----	45mm
P468	Freeman Areola Marker	-----	-----	34mm
P469	Freeman Areola Marker	-----	-----	36mm
P9312	Halpern Breast Marker	-----	-----	38mm
P9313	Halpern Breast Marker	-----	-----	42mm
P5005	Ackerman Areola Marker	-----	5.5" (140mm)	-----
P5006	Ackerman Areola Marker	-----	6.25" (159mm)	-----
P4944	McKissock Keyhole Pattern	-----	-----	38mm
P4945	McKissock Keyhole Pattern	-----	-----	42mm
P4946	McKissock Keyhole Pattern	-----	-----	45mm
P8750	McKissock Mammoplasty Caliper	11¼" (286mm)	-----	-----
P5001	Washer	-----	-----	38mm
P5002	Washer	-----	-----	42mm
P5003	Washer	-----	-----	45mm

Retractors

Reference	Description	Length	Width	Diameter
P895	Ferreira Breast Augmentation Retractor	7½" (191mm)	1" (25mm)	-----
P895FO	Ferreira Breast Augmentation Retractor with fiber optics	7½" (191mm)	1" (25mm)	-----
P529	Biggs Mammoplasty Retractor, standard	8" (203mm)	5cm	-----
P529FO	Biggs Mammoplasty Retractor, standard with fiber optics	8" (203mm)	5cm	-----
P530	Biggs Mammoplasty Retractor, narrow	6" (152mm)	3cm	-----
P530FO	Biggs Mammoplasty Retractor, narrow with fiber optics	6" (152mm)	3cm	-----
P7840	Ersek Retractor, L shaped	8¼" (210mm)	-----	-----
P7841	Ersek Retractor, U shaped	8¼" (210mm)	-----	-----
P675	Fischl Shoe Horn Retractor, double ended	-----	-----	-----

Miscellaneous

Reference	Description	Length	Width	Diameter
P790	Habal Capsulotomy Knife	10¾" (273mm)	7.5mm	-----
P9019	Foerster Capsulotomy Knife	-----	-----	-----
P8670	Amar Mammoplasty Clamp	6½" (165mm)	21mm	-----
P9043	Crow Coagulating Forceps, insulated	9" (229mm)	-----	-----

Availability of these products might vary from a given country or region to another, as a result of specific local regulatory approval or clearance requirements for sale in such country or region.

- Always refer to the appropriate instructions for use for complete clinical instructions.
- Non contractual document. The manufacturer reserves the right, without prior notice, to modify the products in order to improve their quality.
- Warning: Applicable laws restrict these products to sale by or on the order of a physician.

For more information or to place an order, please contact:

United States, Canada, Asia, Pacific, Latin America

USA 800-654-2873 ▪ 888-980-7742 fax

International +1 609-936-5400 ▪ +1 609-750-4259 fax

integralife.com/contact

Manufacturer:



Integra York PA, Inc.
589 Davies Drive
York, PA 17402 ▪ USA